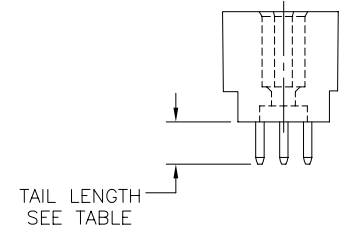
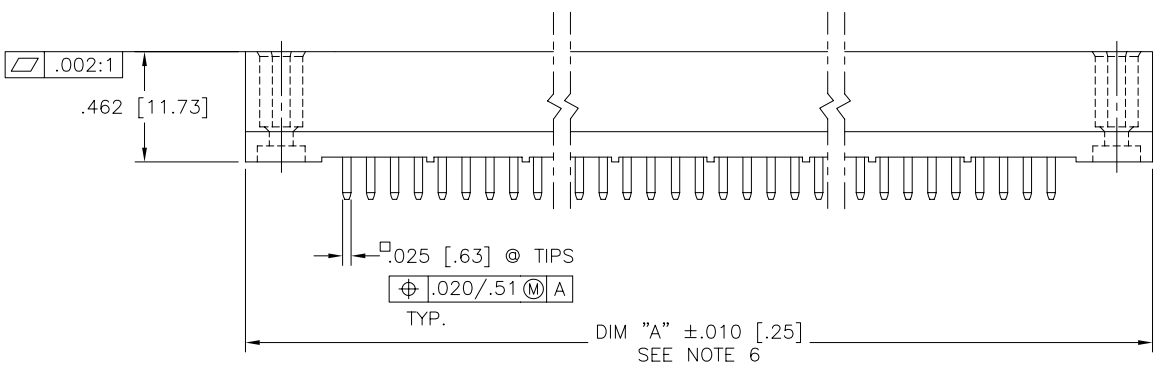
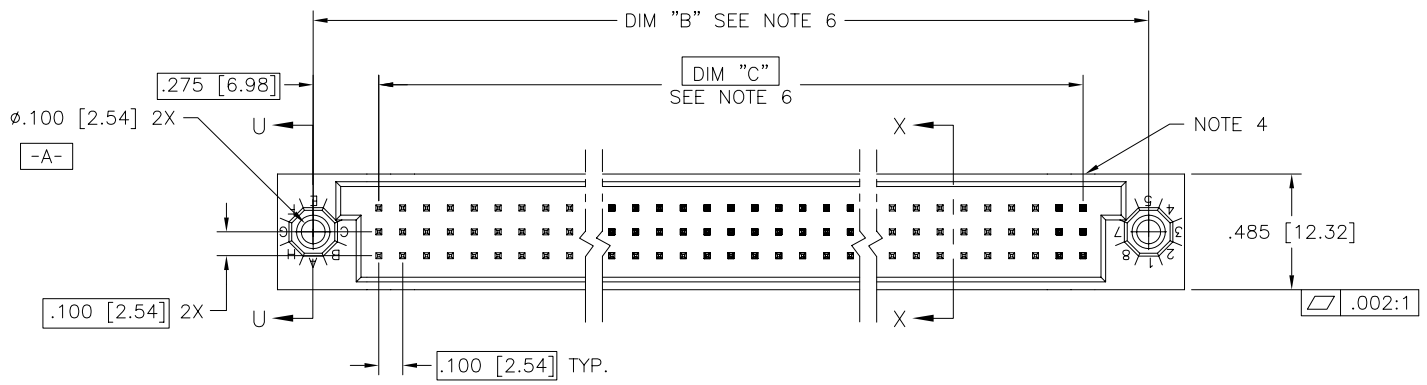




FCIconnect.com

Copyright FCI

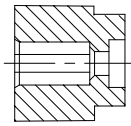
PRODUCT NUMBER  
SEE TABLE



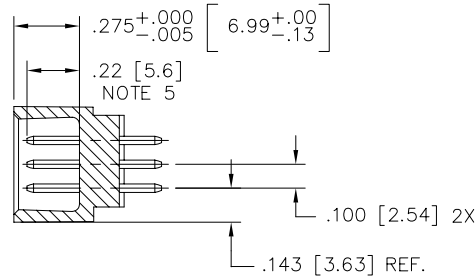
mat'l. code SEE NOTE 3		surface ISO 1302 <input checked="" type="checkbox"/>		tolerance ISO 406 ISO 1101		projection 		product family HPC	
ltr		ecn no		dr		date		tolerances unless otherwise specified	
G	v23910	SAR	12/15/92	angles	linear	.xx±.01/.3	INCH/MM		title
H	v40286	PDP	1/20/94			.xxx±.005/.13	scale 1:1		3 ROW VERTICAL HEADER
J	v90017	HTB	1/7/99	0'±2'		.xxxx±.0020/.051			W/SOLDER TAIL PINS, 0 G.P.
K	v00272	JWS	2/1/00	dr	D.SHEAFFER	3/14/91	FCI		dwg no
L	v05-0753	DAI	10/03/05	enr	S.CLARK	3/14/91			sheet 1 of 4 size
M	v05-1039	DAI	11/11/05	chr	S.CLARK	3/14/91			50012
N	M06-0283	MHT	7/27/06	appd	S.CLARK	3/14/91			A3
sheet	revision	N	N	N	N	N	type		
index	sheet	1	2	3	4		Product Customer Drawing		

form: A3

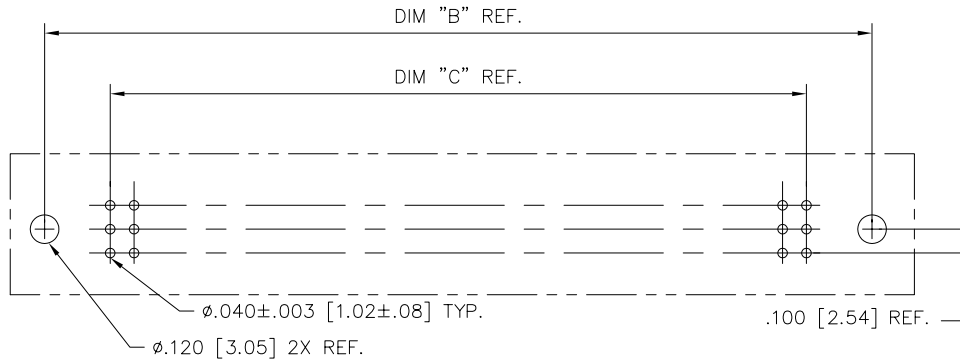
PRODUCT NUMBER  
SEE TABLE



SECTION U-U



SECTION X-X



RECOMMENDED PCB LAYOUT  
(ALL HOLES LOCATED ON .100/2.54 GRID  
UNLESS OTHERWISE SPECIFIED)



Copyright FCI

mat'l. code SEE NOTE 3		surface ISO 1302 ✓	tolerance ISO 406 ISO 1101	projection ⊕	product family HPC
ltr	ecn	no	dr	date	tolerances unless otherwise specified
N					angles linear .xx±.01/.3 .xxx±.005/.13 .xxxx±.0020/.051
					0'±2'
			dr	D.SHEAFFER	3/14/91
			enr	S.CLARK	3/14/91
			chr	S.CLARK	3/14/91
			appd	S.CLARK	3/14/91
sheet	revision				
index	sheet				
				INCH/MM	title 3 ROW VERTICAL HEADER W/SOLDER TAIL PINS, 0 G.P.
				scale 1:1	dwg no 50012
				FCI	sheet 2 of 4 size A3
					type Product Customer Drawing

form: A3



PRODUCT NUMBER	NUMBER OF POSITIONS SEE NOTE 2	TAIL LENGTH ±.015/0.38	TERMINAL PLATING
50012-1YAAA	YYY	.177/4.50	30μ"/.76μ GOLD
50012-1YYAC	YYY	.533/13.54	30μ"/.76μ GOLD
50012-1YYAD	YYY	.733/18.62	30μ"/.76μ GOLD
50012-1YYAG	YYY	.250/6.35	30μ"/.76μ GOLD
50012-1YYAJ	YYY	.120/3.05	30μ"/.76μ GOLD
50012-3YAAA	YYY	.177/4.50	50μ"/1.27μ GOLD
50012-3YYAC	YYY	.533/13.54	50μ"/1.27μ GOLD
50012-3YYAD	YYY	.733/18.62	50μ"/1.27μ GOLD
50012-3YYAG	YYY	.250/6.35	50μ"/1.27μ GOLD
50012-3YYAJ	YYY	.120/3.05	50μ"/1.27μ GOLD
50012-5YAAA	YYY	.177/4.50	30μ"/.76μ GXT
50012-5YYYALF	YYY	.177/4.50	30μ"/.76μ GXT
50012-5YYAC	YYY	.533/13.54	30μ"/.76μ GXT
50012-5YYYCLF	YYY	.533/13.54	30μ"/.76μ GXT
50012-5YYAD	YYY	.733/18.62	30μ"/.76μ GXT
50012-5YYYDLF	YYY	.733/18.62	30μ"/.76μ GXT
50012-5YYAG	YYY	.250/6.35	30μ"/.76μ GXT
50012-5YYYGLF	YYY	.250/6.35	30μ"/.76μ GXT
50012-5YYAJ	YYY	.120/3.05	30μ"/.76μ GXT
50012-5YYYJLF	YYY	.120/3.05	30μ"/.76μ GXT
50012-XX010	165	SEE SHEET 3	30μ"/.76μ Au
50012-XX010LF	165	SEE SHEET 3	30μ"/.76μ GXT

NOTES:

① PRODUCT NUMBERING CODE:  
 50012 - X YYY Z LF  
 LEAD FREE (OPTIONAL)  
 TAIL LENGTH SEE TABLE  
 NO. OF POSITIONS SEE NOTE 2  
 PLATING SEE TABLE  
 BASE NUMBER

PRODUCT NUMBERING CODE FOR  
 SELECT LOAD/FMLB PART NUMBERS:  
 50012 - XXYYY LF  
 LEAD FREE (OPTIONAL)  
 SEQUENCE NUMBER  
 ALWAYS 'XX'  
 BASE NUMBER

- ② THIS PRODUCT IS CONFIGURED IN SIZES OF 6 thru 80 COLUMNS IN INCREMENTS OF ONE. i.e.: 6,7,8,9,.....78,79,80.
- ③ HOUSING MATERIAL: GLASS AND MINERAL FILLED HIGH TEMP. THERMOPLASTIC. FLAME RETARDANT PER UL94V-0. COLOR: BLACK. PIN MATERIAL: PHOS BRONZE

- ④ COMPANY NAME, PART NUMBER AND LOT CODE TO APPEAR ON THIS SURFACE PER BUS-12-108.
- ⑤ REFERENCE 50804 FOR FIRST MATE LAST BREAK AVAILABLE OPTIONS AND FOR SELECTIVELY LOADED HEADER WORKSHEET.
- ⑥ LENGTH FORMULAS:  
 DIM "A" .100/2.54 x NO. OF COLUMNS +.75/19.1  
 DIM "B" .100/2.54 x NO. OF COLUMNS +.450/11.43  
 DIM "C" .100/2.54 x NO. OF COLUMNS -.100/2.54
7. THIS PRODUCT (WITH "LF" SUFFIX) MEETS EUROPEAN UNION DIRECTIVES AND OTHER COUNTRY REGULATIONS AS DESCRIBED IN GS-22-008.
8. THIS HOUSING WILL WITHSTAND EXPOSURE TO 260° C PEAK TEMPERATURE FOR 10-30 SECONDS IN A CONVECTION, INFRA-RED OR VAPOR PHASE REFLOW OVEN.

mat'l. code SEE NOTE 3		surface ISO 1302 ✓	tolerance ISO 406 ISO 1101	projection 	product family HPC
ltr	ecn	no	dr	date	tolerances unless otherwise specified
N					angles linear .xx±.01/.3
					0'±2' .xxx±.005/.13
					.xxxx±.0020/.051
			dr	D.SHEAFFER	3/14/91
			enr	S.CLARK	3/14/91
			chr	S.CLARK	3/14/91
			appd	S.CLARK	3/14/91
sheet index	revision sheet				

title 3 ROW VERTICAL HEADER W/SOLDER TAIL PINS, 0 G.P.	
dwg no 50012	sheet 4 of 4 size A3
type Product Customer Drawing	